

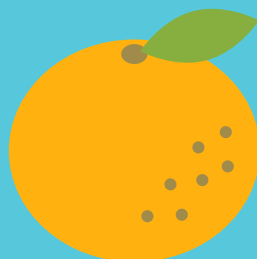
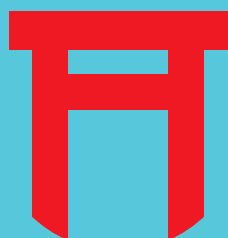
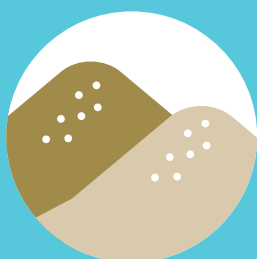


KANSAI, JAPAN

OFFICIAL TOURIST GUIDE

2025-2026

Osaka Prefecture, Osaka City, Sakai City, **Kyoto** Prefecture, Kyoto City, **Hyogo** Prefecture, Kobe City, **Nara** Prefecture, **Shiga** Prefecture, **Wakayama** Prefecture, Mie Prefecture, **Fukui** Prefecture, **Tottori** Prefecture, **Tokushima** Prefecture



THE EXCITING KANSAI
The KANSAI contains the real undiscovered Japan.



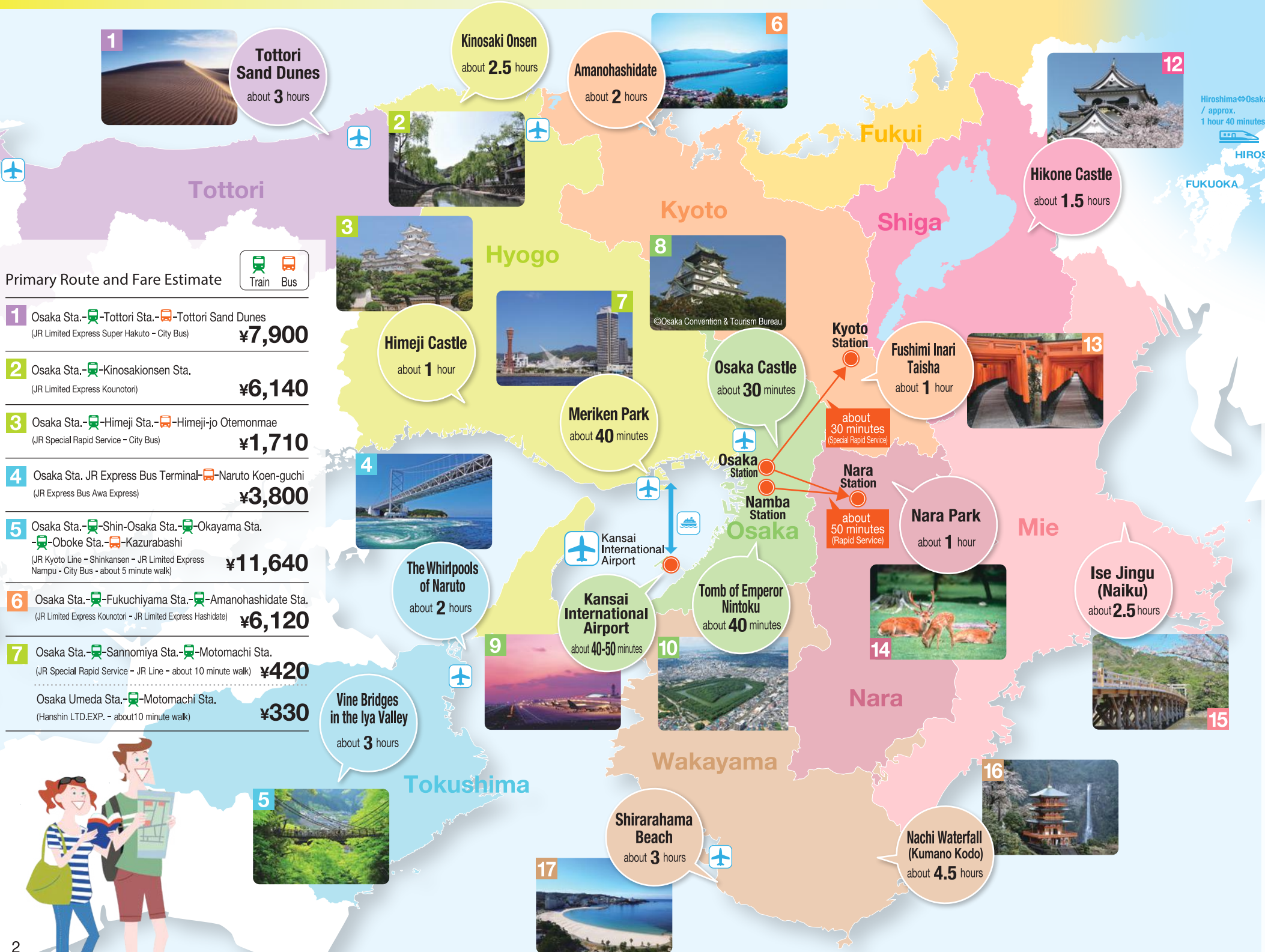
KANSAI Tourism Bureau
The Exciting Journey, KANSAI

Major Famous Places in Kansai

Osaka Prefecture, Osaka City, Sakai City, Kyoto Prefecture, Kyoto City, Hyogo Prefecture, Kobe City, Nara Prefecture, Shiga Prefecture, Wakayama Prefecture, Mie Prefecture, Fukui Prefecture, Tottori Prefecture, Tokushima Prefecture

Check out places that are just full of Kansai charms!

(The travel times are from Osaka main stations, not including train transfer times.)

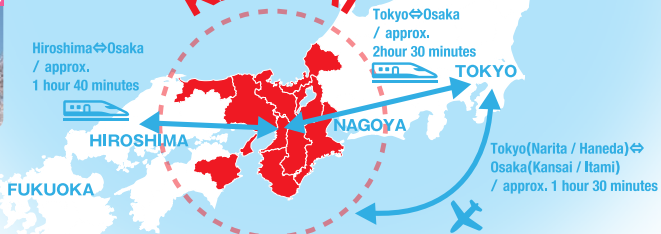


Primary Route and Fare Estimate



- 1** Osaka Sta. - - Tottori Sta. - - Tottori Sand Dunes
(JR Limited Express Super Hakuto - City Bus) **¥7,900**
- 2** Osaka Sta. - - Kinokuni-ji Temple
(JR Limited Express Kounotori) **¥6,140**
- 3** Osaka Sta. - - Himeji Sta. - - Himeji-jo Otemonmae
(JR Special Rapid Service - City Bus) **¥1,710**
- 4** Osaka Sta. - JR Express Bus Terminal - - Naruto Koen-guchi
(JR Express Bus Awa Express) **¥3,800**
- 5** Osaka Sta. - - Shin-Osaka Sta. - - Okayama Sta.
- - Oboke Sta. - - Kazurabashi
(JR Kyoto Line - Shinkansen - JR Limited Express Nambu - City Bus - about 5 minute walk) **¥11,640**
- 6** Osaka Sta. - - Fukuchiyama Sta. - - Amanohashidate Sta.
(JR Limited Express Kounotori - JR Limited Express Hashidate) **¥6,120**
- 7** Osaka Sta. - - Sannomiya Sta. - - Motomachi Sta.
(JR Special Rapid Service - JR Line - about 10 minute walk) **¥420**
Osaka Umeda Sta. - - Motomachi Sta.
(Hanshin LTD.EXP. - about 10 minute walk) **¥330**

KANSAI



- 8** Osaka Sta. - - Osakajoko Sta.
(JR Osaka Loop Line Outer Loop - about 20 minute walk) **¥170**
- 9** Osaka Sta. - - Kansai-airport Sta.
(JR Limited Express Haruka) **¥2,740**
Namba Sta. - - Kansai airport Sta.
(Nankai Express Rapid) **¥1,490**
- 10** Osaka Sta. - - Tennoji Sta. - - Mozu Sta.
(JR Osaka Loop Line Inner Loop - JR Hanwa Line - about 5 minute walk) **¥410**
- 11** Osaka Sta. - - Tsuruga Sta. - - Awaraonsen Sta. - - Tojinbo
(JR Limited Express Thunderbird - Hokuriku Shikansen - City Bus) **¥8,410**
- 12** Osaka Sta. - - Hikone Sta.
(JR Special Rapid Service - about 15 minute walk) **¥1,980**
- 13** Osaka Sta. - - Kyoto Sta. - - Inari Sta.
(JR Special Rapid Service - JR Nara Line - about 5 minute walk) **¥860**
Namba Sta. - - Yodoyabashi Sta. - - Tambabashi Sta.
- - Fushimi-inari Sta.
(Osaka Metro - Keihan Limited EXP. - Keihan Sub-EXP. - about 5 minute walk) **¥610**
- 14** Osaka Sta. - - JR Nara Sta. - - Todaijidaibutsuden-kasugataisha-mae
(JR Yamatoji Line Rapid Service - City Bus) **¥1,070**
Osaka Namba Sta. - - Kintetsu Nara Sta.
(Kintetsu Limited Express - about 10 minute walk) **¥680**
- 15** Osaka Namba Sta. - - Isuzugawa Sta. - - Naiku-mae
(Kintetsu Limited Express - City Bus) **¥4,260**
- 16** Osaka Sta. - - Kii-Katsuura Sta. - - Nachi-no-Taki-mae
(JR Limited Express Kuroshio - City Bus) **¥7,890**
- 17** Osaka Sta. - - Shirahama Sta. - - Shirahama Bus Center
(JR Limited Express Kuroshio - City Bus) **¥6,150**

The fares above are subject to change based on the season. Please confirm beforehand.

THE EXCITING KANSAI

The KANSAI contains the real undiscovered Japan.



Visit the undiscovered Kansai attractions that will enchant you.



In addition to the key cities like Osaka, Kyoto, Kobe and Nara, the Kansai region has many other appealing destinations. There, you can experience the traditions, myths, artistic and food cultures, etc. that local people have been fostering and promoting over a long period of history. Make little side trips to stay there and enjoy hands-on experiences and local specialties as well as to find out something new and different. We hope you will know more about Japan. Here are eight locations of charm to invite you and excite you.



More info.
<https://www.the-kansai-guide.com/en/exciting/>

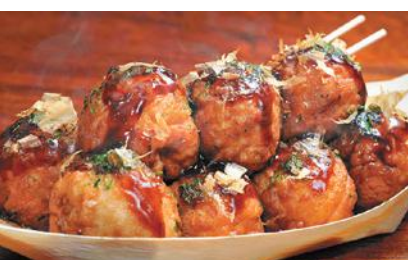
Kansai's four big cities ingrained in traditions and cultures

Osaka

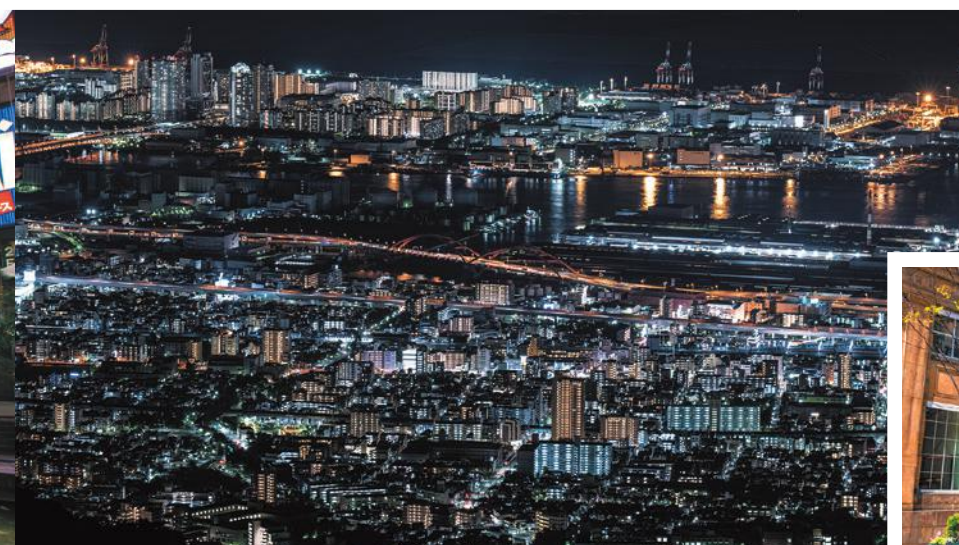
Thanks to its water transportation system, the water capital progressed economically and became a gateway, both domestic and international, and a big commercial town.



Osaka Aquarium Kaiyukan / OSAKA



Dotonbori / OSAKA



Rokko Cable Car / HYOGO



Kyukoryuchi Street / HYOGO

Kobe

For its trade-oriented economy from old times, the port town is also famous for trendy appeals blended sophisticatedly with things Western.



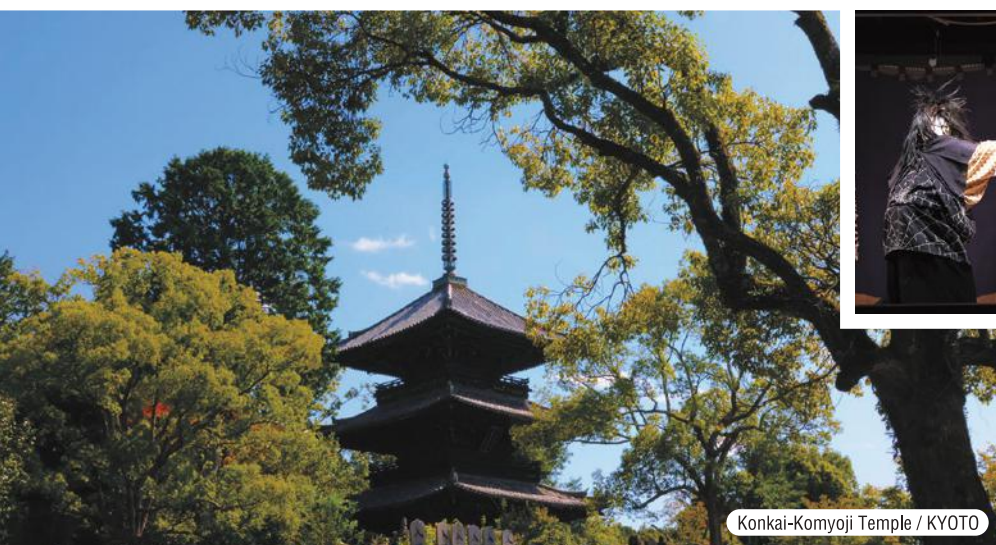
For more than 1000 years, the city flourished as the ancient capital of Japan. You will find, here and there, Japanese unique aesthetics.

Kyoto



Being an eighth-century capital full of historical and romantic elements, the city preserves many world-class Buddhist buildings and other cultural assets.

Nara



Konkai-Komyoji Temple / KYOTO



Fushimi Inari-taisha Shrine / KYOTO



Yoshino / NARA



Nara Park / NARA



Todaiji Temple / NARA

KII PENINSULA

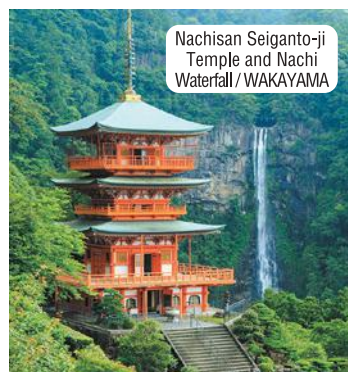
Wakayama / Nara / Mie



Daimonzaka Slope / WAKAYAMA

Kumano Kodo for religious pilgrimage to spiritual roots

This peninsula has some of Japan's spiritual places. The pilgrimage route Kumano Kodo leads to Kumano Hongu Taisha shrine, which lots of people visited for salvation. Why don't you follow the footsteps of ancient pilgrims to experience the mystical force?



Nachisan Seiganto-ji Temple and Nachi Waterfall / WAKAYAMA



Onigajyo / MIE



Swordsmith Chikage / MIE



More info.
<https://www.the-kansai-guide.com/en/exciting/04/>

ISE & NARA

Nara / Mie

Historical and romantic trips in mythical and ancient worlds

The area includes sites from Ise, where the highest Shinto shrine Ise Jingu is located, to Nara, where you will find a large number of venerable Buddhist temples. Follow in the steps in mythical, ancient and medieval ages. Many other things historical are ancient tombs, sumo wrestling, sake, female divers, etc.



Ujibashi Bridge / MIE

© "Visit ISESHIMA" Bureau



Hasedera Temple / NARA



Ama Hut Hachiman / MIE



More info.
<https://www.the-kansai-guide.com/en/exciting/05/>

WEST LAKE BIWA & FUKUI

Shiga / Fukui

Take your time for waterscape with many lakes and mountains

Japan's largest lake Biwa and the mountains west of the lake provide people with plenty of spring water. Water has been backing up sake brewing and fermented food. The lakes and mountains are still important for religious pilgrimage. Experience the magnificent view of Lake Biwa and local people's life.



Eihei Temple / FUKUI



Shirahige Shrine / SHIGA



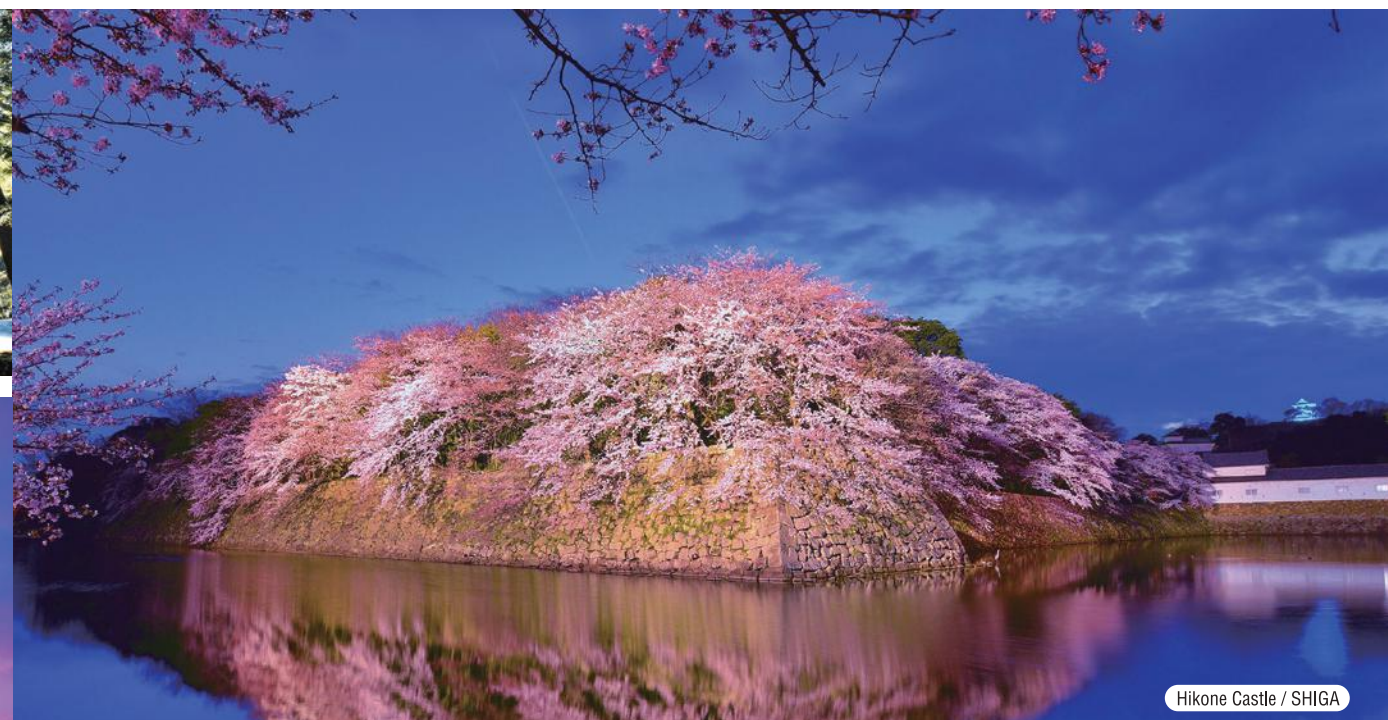
More info.
<https://www.the-kansai-guide.com/en/exciting/03/>



View of Lake Biwa from Mt. Hiei / SHIGA

FUKUI, EAST LAKE BIWA & MIE

Shiga / Mie / Fukui

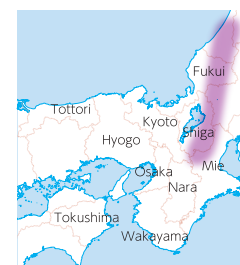


Hikone Castle / SHIGA



Trip to the ancient samurai land and current craftsmanship sites

Close to Kyoto, lots of samurai warriors came and went. Some ninja communities are still known and conserved. Armor, ceramics, Japanese paper, knives and other traditional crafts were developed and currently glasses and other modern goods are produced. Enjoy the craftsmanship country with a long period of history.



More info.
<https://www.the-kansai-guide.com/en/exciting/08/>



Megane Museum/FUKUI

HARIMA, SETTSU

Hyogo

Look at the elegant Himeji Castle and down the road to Kyoto

Now 400 years old, the castle is still graceful. Also known as the Egret Castle, the fortress protected the strategic spot for its roads to the capital and the sea routes to the port. Along the highroads where samurai warriors swaggered about, swordsmiths and sake brewers boosted their business. Experience rich culture of the country.



Kikyo Hayamitsu Japanese Sword Factory / HYOGO



Himeji Castle / HYOGO



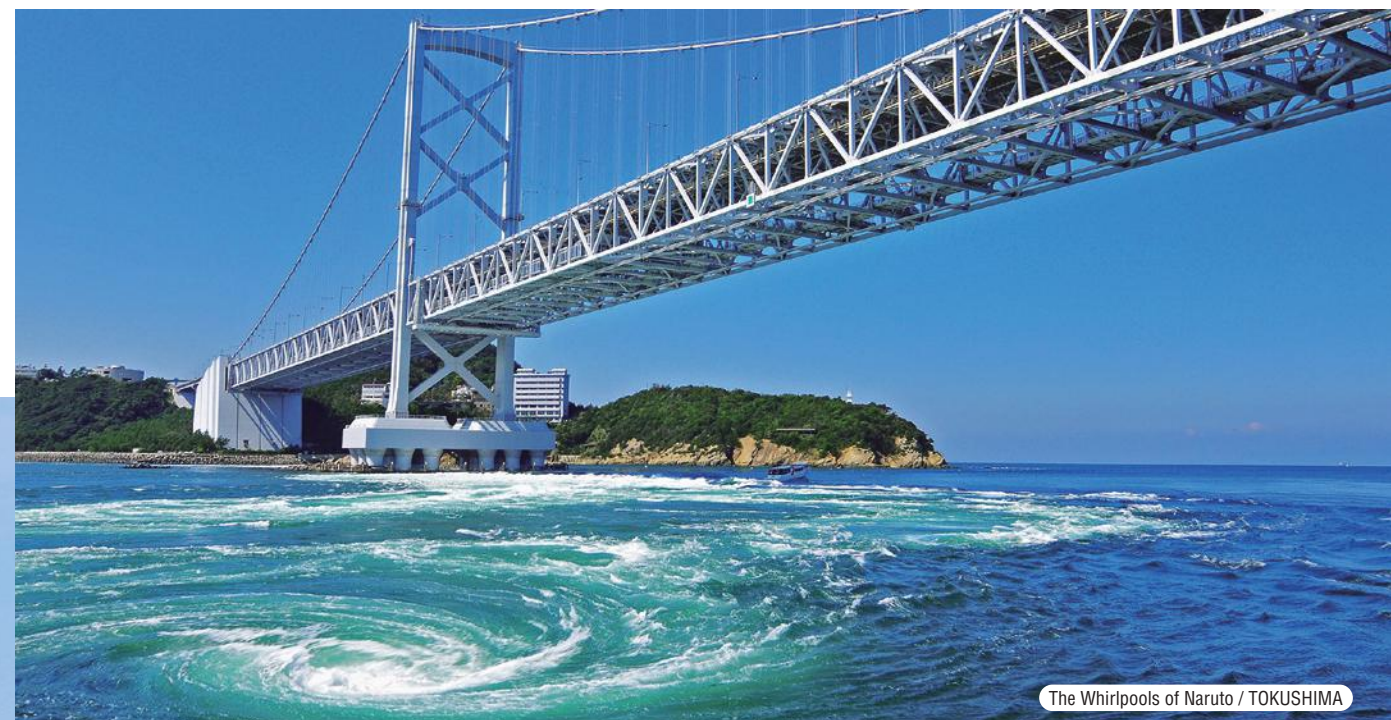
Arima Onsen/HYOGO



More info.
<https://www.the-kansai-guide.com/en/exciting/02/>

KOBE, AWAJI ISLAND & TOKUSHIMA

Hyogo / Tokushima / Wakayama



The Whirlpools of Naruto / TOKUSHIMA

Cross the bridge onto the island from which Japan was born

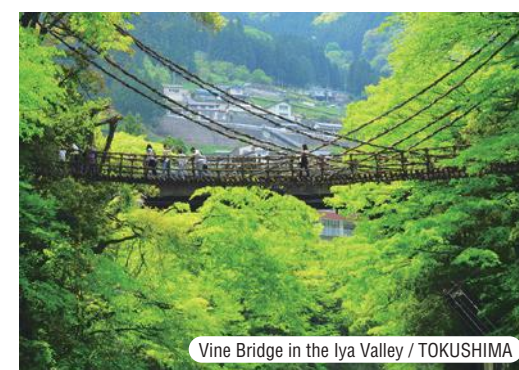
According to legend, Japan was built, starting with the birth of Awaji Island. The surrounding waters get whirled and the landscape changes face dramatically. The world's longest suspension bridge serves to connect the main island with Shikoku. Joruri, the Japanese-style puppet play, was also handed on to the next generations. Get to Japan's first-born island.



Keino Matsubara / HYOGO



Awa Odori / TOKUSHIMA



Vine Bridge in the Iya Valley / TOKUSHIMA



More info.
<https://www.the-kansai-guide.com/en/exciting/06/>

TAMBA

Hyogo / Kyoto



Miyama's Thatched Village / KYOTO

Take an excursion for the land of harvest

This country is blessed with Mother Nature for agricultural activities. Crops with the name “Tamba” are available even today. Kyotamba served the ancient capital with its produce and lumbers, whereas the castle town Tamba-Sasayama was prosperous for transport. You will find prototypic Japanese landscape also for soothing and bountiful nature.



Hohokabe Shrine Gion Festival / HYOGO



More info.
<https://www.the-kansai-guide.com/en/exciting/07/>

SAN'IN COAST

Tottori / Hyogo / Kyoto

Go for an outing to the shoreline's beauty and bounties

With the highland just close the sea and the intricate terrain, the landscape looks beautiful. It includes a large dune. The harvest from the sea makes for a fishing industry and a unique cuisine culture. Peaceful life continues with spectacular nature. Join us for quiet hours and days.



Tottori Sand Dunes / TOTTORI

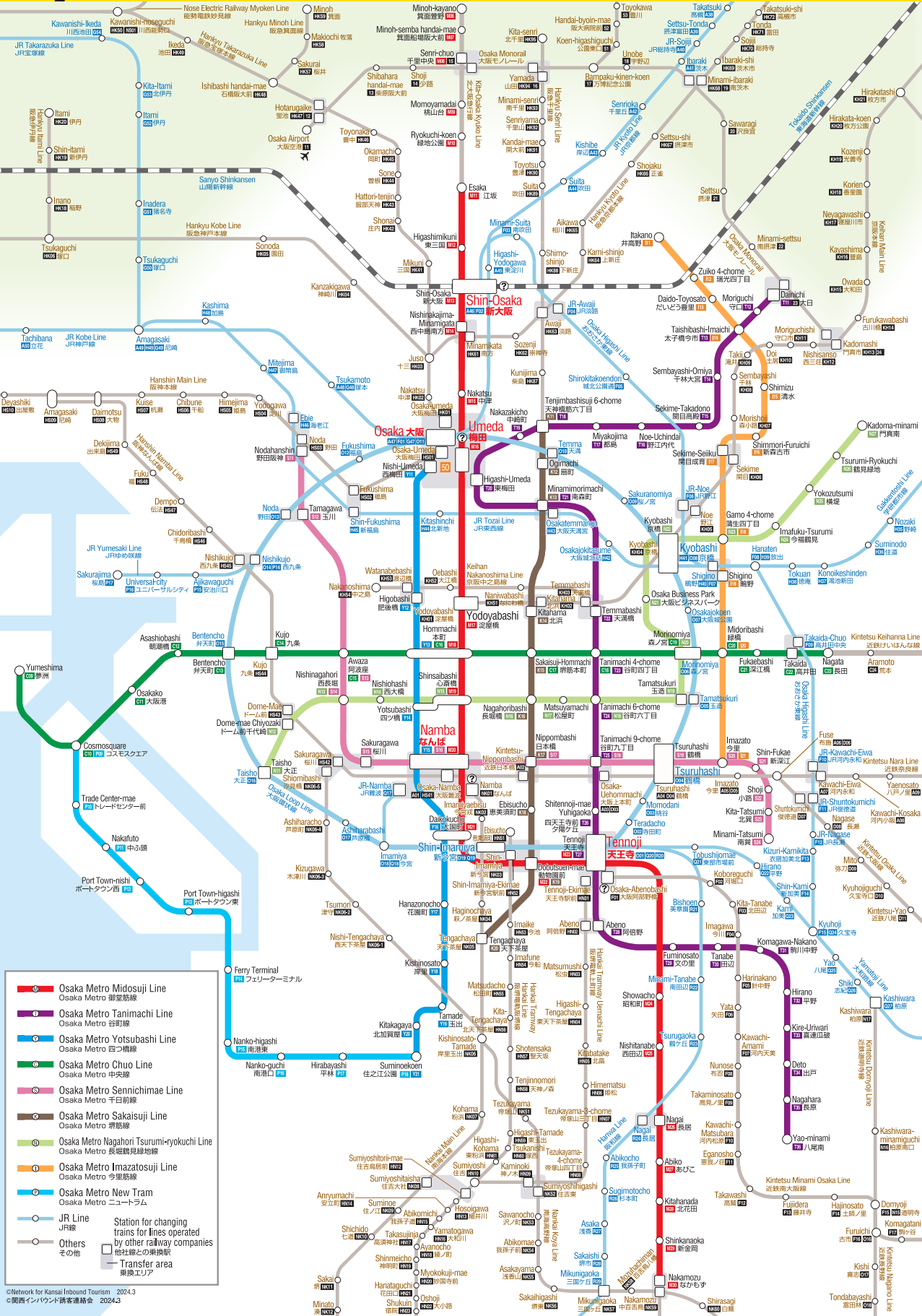


Uradome Kaigan Coast / TOTTORI



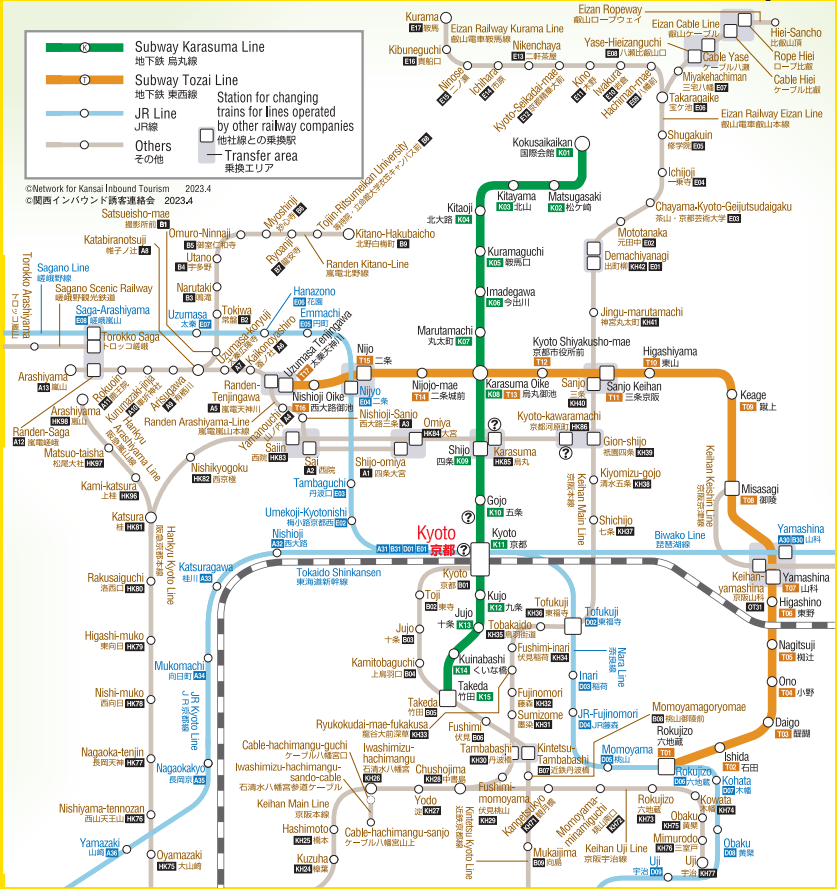
More info.
<https://www.the-kansai-guide.com/en/exciting/01/>

Major urban areas



Osaka

Kyoto



Kobe



Excellent! Kansai Main Tourist Information Centers in Kansai

OSAKA

- **Kansai Tourist Information Center**
Kansai International Airport
Central 1F, Terminal 1 Building
- **Tourist Information SHIN-OSAKA**
Travel Service Center SHIN-OSAKA, Concourse, 3F, JR Shin-Osaka Station
- **Osaka Metro & City Bus Information & Inquiries Hotline**
Tel. 050-3355-8208 * Telephone enquiries only
- **Tourist Information OSAKA**
Travel Service Center OSAKA, Central Concourse, 1F, JR Osaka Station
- **Tourist Information NAMBA**
Nankai Namba Station, 1F, North Exit
- **Hankyu Tourist Center, OSAKA-UMEDA**
1F, Hankyu Osaka-umeda Station
- **Kintetsu Department Store Main Store**
Abeno Harukas Foreign Customer's Salon
3.5F, Wing Building, Kintetsu Dept. Store

KYOTO

- **Kyoto Tourist Information Center (Kyo Navi)**
2F, Kyoto Station Building
- **KANSAI TOURIST INFORMATION CENTER KYOTO**
3F, Kyoto Tower
- **Hankyu Tourist Information Center, Kyoto Kawaramachi**
B1, Hankyu Kyoto-kawaramachi Station
Karasuma
B1, Hankyu Karasuma Station

KOBE

- **Kobe Information Center**
The South of JR Sannomiya Station East Gate, and downstairs of Port Liner Sannomiya Station
- **Hanshin Railway Service Center**
B1, Hanshin Kobe-Sannomiya Station

NARA

- **Nara City Tourist Information Center**
JR Nara Station Northeast
- **Kintetsu-Nara Station Tourist Information Center**
1F, Kintetsu-Nara Station
- **NARA Visitor Center & Inn**
3 Ikono-cho, Nara City
10 minutes walk from Kintetsu Nara Station

For the latest information, visit the website or contact the local Information Center.



Features of railways in Japan

- To board trains, you need to buy a paper ticket or an IC card with a sufficient balance of cash value added in advance.
- On some limited express trains, you must have a limited express ticket in addition to the regular boarding ticket.
- On some limited express trains, all seats are reserved. The seat number and car number are noted on the reserved seat ticket.

About IC cards

By adding enough cash value to the card for your rides in advance, you can ride trains, subways, buses, and certain other means of transport with the IC card. It is very convenient, because you simply pass it over the IC card reader when boarding and exiting.

1 Buy a ticket (boarding ticket) or an IC card

There are two ways to buy tickets or IC cards: **purchase from station staff at the window, or purchase using the ticket vending machines.**

How to use the ticket vending machines

● Buying a ticket

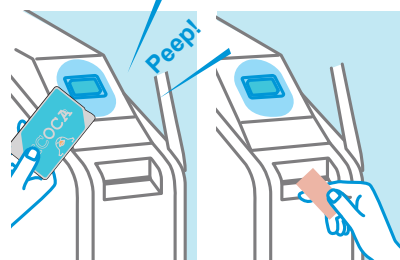
1. Check the fare to the destination station on the fare schedule posted above the vending machines.
2. Put enough cash for this fare into the machine, and push the button indicating the fare to the destination. Don't forget to take any change for your payment.

● Buying an IC card (In case of ICOCA)

1. Messages will appear in English if you push the "English" button on the screen.
2. Push "IC card purchase" on the screen.
3. Insert 2,000 yen in cash. There is a deposit charge of 500 yen for the card. You can use the balance of 1,500 yen as e-money.

* The deposit (500 yen) is returned when the card is returned.

Going through the ticket gate



In almost all stations, the ticket gates are automatic. You can go through them by inserting the paper ticket into the slot or passing the IC card over the reader.

How to add value to your IC card (using a machine)

1. Insert your card into the card holder on the upper right part of the machine.
2. Select the desired additional amount of value from the amounts displayed on the screen.
3. Insert cash for the amount you selected.
4. Take the card with the amount added.



The procedure may differ with the machine. Please ask the staff if you have any problems.

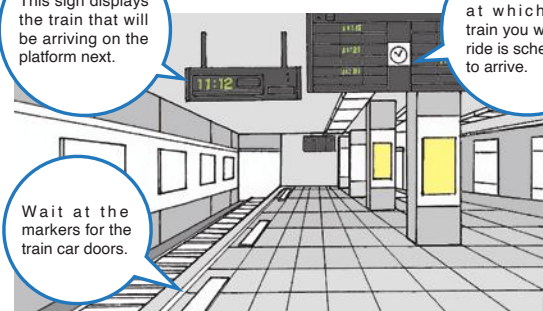
2 Go to the right platform for the train you want to ride

On the train information panel, etc., check the number of the platform for your train and the number of the boarding door, and stand in line at the corresponding place. When the train arrives, let all of the people exiting go out first, and then board in single file, in the same order as the line.

This sign displays the train that will be arriving on the platform next.

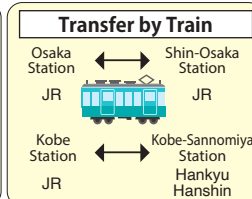
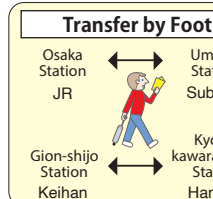
Check the time at which the train you want to ride is scheduled to arrive.

Wait at the markers for the train car doors.



point Transfer Trivia: Station Names

Stations with similar names may actually be far apart, and there are stations with different names that are within walking distance of each other.



point Types of trains

Japanese trains have different designations depending on the railway company. They include "limited express," "rapid," and "express." In addition, even trains going in the same direction may stop at different stations. In the case of some limited express trains, you must pay an extra charge in addition to the regular fare. If you have any doubts, please check with the station staff.



Kansai Railway Transfer Guide (Basement Floor Map)

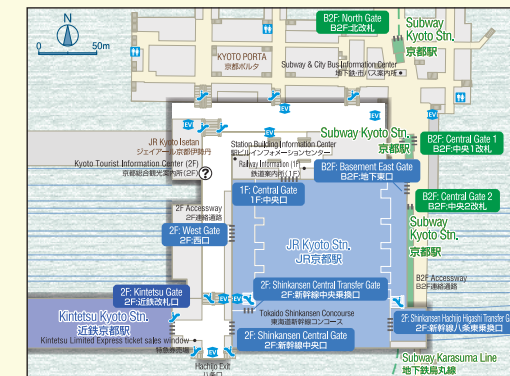
Osaka Area

Osaka Metro: Umeda, Nishi-Umeda, Higashi-Umeda Stn., Hanshin: Osaka-Umeda Stn., Hankyu: Osaka-umeda Stn., JR-West: Osaka Stn., Kitashinchi Stn. Transfer Guide



Kyoto Area

Subway: Kyoto Stn., Kintetsu: Kyoto Stn., JR-West: Kyoto Stn. Transfer Guide

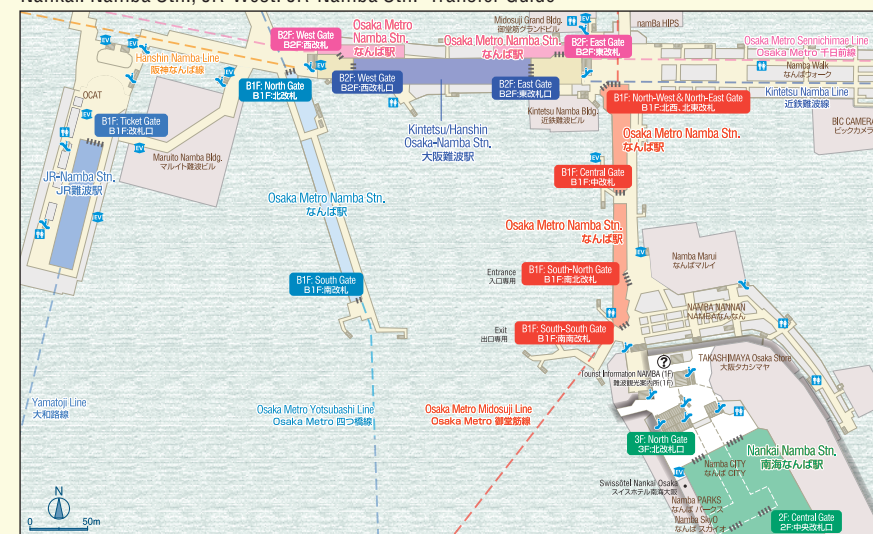


Kobe Area

Subway: Sannomiya Stn., Sannomiya-Hanadokei-mae Stn., Hankyu: Kobe-Sannomiya Stn., Hanshin: Kobe-Sannomiya Stn., Port Liner: Sannomiya Stn., JR-West: Sannomiya Stn. Transfer Guide



Osaka Metro: Namba Stn., Kintetsu/Hanshin: Osaka-Namba Stn., Nankai: Namba Stn., JR-West: JR-Namba Stn. Transfer Guide



Legend

- ② Tourist Information 観光案内所
- 改札口 Ticket gate
- エスカレーター Escalators
- エレベーター Elevators
- トイレ Toilets
- 地上階 Aboveground floor
- 地下通路 Underground passage
- 鉄道線(地上) Railway line (aboveground)
- 鉄道線(地下) Railway line (underground)

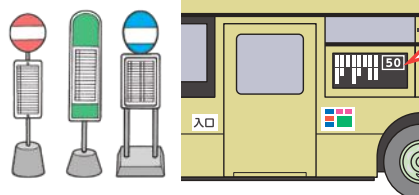


Features of Japanese buses

- To board a bus, you must have cash, a ticket, or an IC card. (IC cards cannot be used on some bus lines.)
- Do not attempt to pay the bus fare with big-denomination bills (5,000 or 10,000 yen). Some buses do not give change for fare payments. You can pay more smoothly if you prepare sufficient small change in advance.
- The fare schedule differs with the area and bus company. Some apply a uniform fare, and others, a zone-based fare. Similarly, passengers pay when boarding in some cases and when exiting in others.
- There are generally different service schedules for weekdays, Saturdays, and holidays. Make sure that you are not looking at the wrong schedule for the day in question.

1 Points when boarding buses

In bus boarding areas, the boarding spot (bus stop) varies with the destination. The bus line number is displayed above the driver's seat and on the side of the bus. Make sure that the bus you are boarding will go to your destination. One door is used only for boarding, and the other, only for exiting. The location (front or rear) depends on the bus.



The number displayed on the front and side of the bus is the bus line number.

Depending on the bus, the passengers pay either when boarding or when exiting. If a numbered ticket is dispensed when you board, take it. If you plan to pay the fare with an IC card, pass it over the reader when you board. If you pay with cash, first put the cash into the fare box and then the numbered ticket.

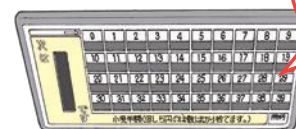


2 Points when exiting buses

When your bus stop is next, notify the driver of your intention to exit by pushing the exit button by your seat or on a railing. If passengers pay when they exit, check the fare for the number on the ticket you received when boarding, and prepare the amount of cash to pay it. When exiting, put the cash and numbered ticket into the fare box. If you are paying by IC card, hold it over the reader. Get off the bus slowly in order, and keep your place in the line of passengers waiting to exit.



If no passenger pushes this button, the bus will not stop at the next bus stop.



If a numbered ticket is dispensed, check the fare for the number on the ticket you have.



Features of taxicabs in Japan

- Cash and credit cards are accepted for payment of the fare. Some credit cards may not be accepted by some companies. Please check with the driver when boarding.
- There is a flat fare for a ride up to a certain distance (e.g., 640 yen for the first 2 kilometers). You must pay this fare even if you ride for a shorter distance.
- In Japan, you do not have to tip the driver.

1 Points when boarding taxicabs

Many taxicabs are lined up waiting for customers in the vicinity of stations and by hotels, etc. You may also hail a taxicab going down the street. In Japan, taxicabs come in different automobile models and colors. They can be spotted by the light on the roof. If the light is on, it means the taxicab is empty.



This kind of sign is displayed at the taxicab boarding area.



The taxicab is empty if the light on top is lit.

The driver operates the taxicab doors, which open and close automatically. Normally, the passenger sits on the left side of the back seat. If there are many passengers, one may sit in the front seat, next to the driver. The door for the front seat is opened by hand.

The doors open and close automatically. Do not try and open them yourself.



2 Points when exiting taxicabs

The fare is indicated on the meter. Once you pay it by cash or credit card, the door on the left side will automatically open. Do not open the door on the right side, from which it would be dangerous to exit. Get off the taxicab slowly and carefully. Before exiting, make sure you do not forget anything.



The door also opens and closes automatically when exiting. Do not try and open it yourself.



Learn Japanese etiquette!



In public transport facilities

Avoid talking on a mobile phone or conversing in a loud voice on trains or buses.



Restaurants

In buffet service, take no more food than you can eat.



In Japan, you do not have to tip. It is not customary either for wait staff to accept tips.



Hot springs and public baths

Wash your whole body off before getting into the bath.



Do not put your towel into the water in the bath.

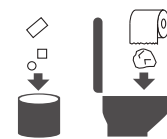


Restrooms

Do not get up on the toilet seat.



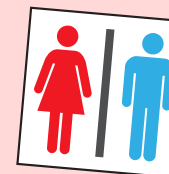
After using toilet paper, flush it down the toilet. Throw any other rubbish into the bin in the restroom.



point

Names and marks for restrooms

In Japan, the word used for restrooms may change, depending on the location and environment.



The mark on signs indicating restrooms is generally as shown at left, but there are other types of marks as well.



There are also other notations for "restroom."



When a disaster strikes

Speak to Japanese

Talk to Japanese around you by using this support tool in case of a disaster.
By preparing pen and paper, you will be able to have smoother communication.

English

Should I stay here?
Or should I evacuate?

Is there any risk of Tsunami around here?
Was a tsunami alert issued?

May I follow you for a while?

What is being announced right now?

I am now going to -. Can I reach -
under the current conditions?

Can you please show me this site on
your smart phone?

Let's evacuate together.
Please follow me.

You had better stay here for a while.

Please wait a minute,
I will check the information.

Sorry, I can't tell you because I don't
have any clear information yet.

話しかけられた日本人の方へ

分かる範囲で、お手伝いをお願いします。ただし、答えがご自身も分からない場合は、はっきりとお伝えください。下段は、回答の際に指を差してご利用ください。

日本語

ここで待機すべきですか？
どこかに避難した方がいいですか？

このあたりで、津波がくるおそれはありますか？
津波警報は出ていますか？

しばらく、あなたに付いていて、
行動をとるにしても良いですか？

今、どういことがアナウンスされていますか？

私は〇〇に向かっています。
現在の状況で〇〇に行くことはできますか？

あなたのスマートフォンで、
このサイトを見せてもらえますか？

いっしょに避難しましょう。付いてきてください。

しばらくこの場で待機するのがよいです。

確かな情報を調べてみますので、
数分お待ちください。

私もまだ状況がよくわからず、
確かなことをお伝えできません。

Safe trip | App and Web site



Safety tips

For Android

For iPhone



Free applications for notification of emergency earthquake information, tsunami information, volcanic eruption bulletins, and information on other meteorological phenomena



For your safe travel



Browse the following website for any news that may cause delays in transportation services in the Kansai area or affect your travel plans.



Emergency telephone number

Check contact information in advance so you can calmly take action in emergencies.

Telephone number to call an ambulance
In case of illness or injury

119

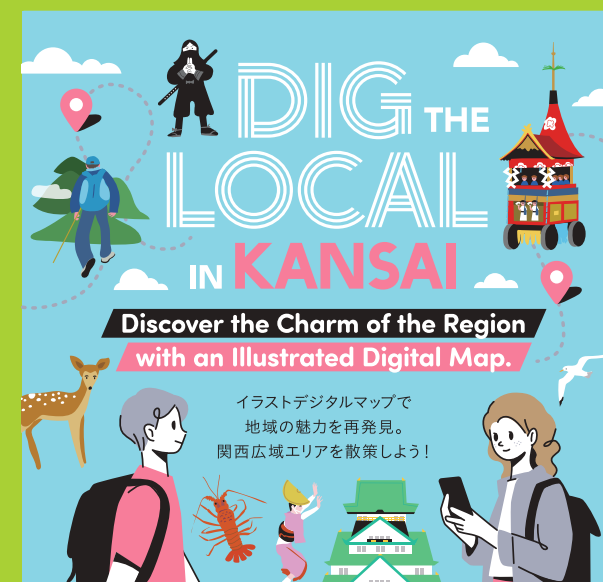
Telephone number to call the police
In case of crimes, accidents, etc.

110

Telephone numbers for notification of lost credit cards

Credit card companies

American Express 0120-020-120 MasterCard 00531-11-3886
Diners Club 0120-074-024 Visa Card 00531-11-1555
JCB 0120-794-082 UnionPay 0034-800-800-287



Let's Read the

さあ、地図を探そう！



QR to Find the Map!



Smart Transport Services Application to Go Around in Kansai

KANSAI MaaS

Use KANSAI MaaS for travel around Kansai, easy and comfy.



Get smart, get moving in the 7 Kansai prefectures. From route planning to must-see places.



Find the quickest way, incl. bikes and buses.

Info on along-the-railroad popular sites.

Ultimate itineraries to fully enjoy Kansai.

Easy to book and pay train tickets

WEB

<https://www.kansai-maas.jp/lp/>



IC card type ticket with special benefits

KANSAI ONE PASS

To be used for travel on JR, subways, private railways and buses.



©Tezuka Productions

Just touch the card at the ticket gate and you're ready to go!

No need to buy a ticket every time you get on the train. The card is rechargeable.

Check our website.
<https://kansai.onepass.com>



Unlock the Best of KANSAI. Your Journey Starts Here!



Kansai



Safe travel

Things to do

Gastronomy

Getting around

Events

Accommodations



All about Wonderful Time in Kansai

The Gate to KANSAI



CONTENTS

Useful info	Helpful for transportation systems, etc.
Safe travel	Tips for your reliable, comfortable journey.
Things to do	Must-see, must-watch spots in each area.
Gastronomy	Culinary delights and restaurants.
Getting around	Best deals for discount tickets and tour passes.
Events	Updates on local festivals and events.
Accommodations	Hotels, inns, guesthouses and other lodgings.
Souvenir	Suggestions for local souvenirs and tokens.
What's New KANSAI	Up-to-date information about Kansai.
Map	Kansai region at a glance.

<https://www.the-kansai-guide.com/>



KANSAI Tourism Bureau
The Origin of Japan, KANSAI